



# Illuminated Pushbutton Switches water proof

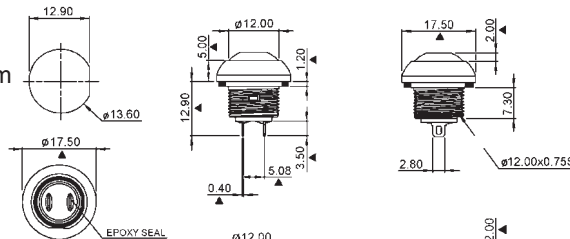
## Specifications:

Contact rating:	125 V AC, 125 mA / 50 V DC, 100 mA / 32 V AC, 400 mA
Contact resistance:	< 50 mΩ
Insulation resistance:	> 1000 MΩ at 500 V DC
Dielectric strength:	1000 V, 50 Hz for the duration of 1 minute
Operating temperature:	-30° to +85° C
Mechanical life:	minimum 1 000 000 operations
Contacts:	gold-plated over silver
Terminals:	gold-plated
Travel:	1,5 mm
Material:	case: thermoplastic meets UL 94 V-0; button: PA
Water proofing:	IP 67
Soldering conditions:	hand-soldering – max.: 3 sec, 300° C

## Models: Switching functions

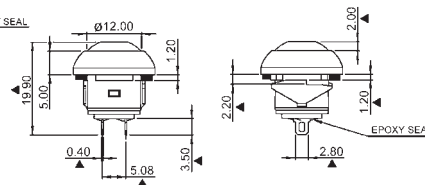
DPW 1 CG \*

off – mom



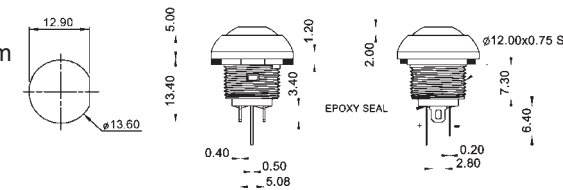
DPW 1 CG-S \*

off – mom



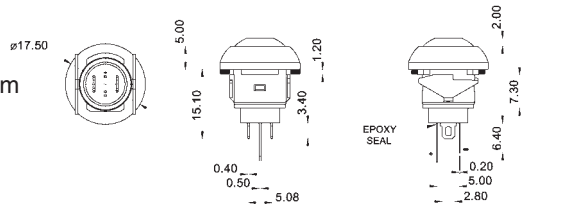
DPWL 1 CG \*

off – mom



DPWL 1 CG-S \*

off – mom



\* Cap Color

W	white
K	black
R	red
O	orange
Y	yellow
G	green
B	blue

LED Color

W	white
R	red
Y	yellow
G	green
B	blue

### Electro-optical data LED (at 20 mA):

Color	Vf (V)		Iv (mcd)		Viewing angle
	Typ	max.	min.	Typ	
red	2.1	2.6	42.0	100.0	35°
yell./green	2.0	2.6	42.0	80.0	
yellow	2.1	2.6	94.0	200.0	
blue	2.8	3.2	28.0	70.0	
white	3.5	4.0	140.0	300.0	